

PIEDRAVIVA

Living & Leisure

# THIS IS HOW OUR STORY BEGAN IN AJIJIC



*The story continues*



**PIEDRAVIVA**  
Living & Leisure

The value has increased by

**+60%** *as of 2024*



**PHASE 1**

SUCCESSFULLY

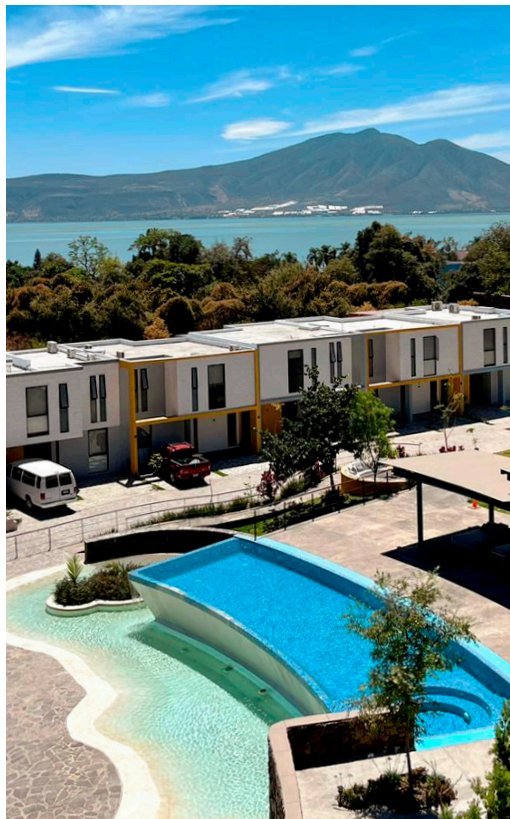
*Sold*

*06*

HOUSES

*16*

APARTMENTS





**PIEDRAVIVA**

Living & Leisure

## PRE-SALE OF PHASE

A REALITY, A SOLID INVESTMENT,  
EXCELLENT VALUE APPRECIATION.

2



## PHASE 2

06  
HOUSES

160 M<sup>2</sup> OF LAND  
AND 181 M<sup>2</sup> OF CONSTRUCTION.

24  
APARTMENTS

STARTING FROM 130 M<sup>2</sup>



Única Casa  
disponible

Only House  
available



ONIX  
*Model*

# ONIX

Model

## 3 BEDROOMS

**AREA:**  
191 M<sup>2</sup> OF LAND  
196 M<sup>2</sup> OF CONSTRUCTION

### GROUND FLOOR:

- 2 PARKING SPACES
- BEDROOM
- FULL BATHROOM
- LIVING ROOM
- INTERIOR TERRACE
- DINING ROOM
- FULLY EQUIPPED KITCHEN
- PANTRY AREA
- LAUNDRY AREA
- GARDEN

### UPPER FLOOR:

- MASTER BEDROOM WITH WALK-IN CLOSET,  
FULL BATHROOM, AND TERRACE
- BEDROOM 2 WITH FULL BATHROOM

## Features:

- GRANITE COUNTERTOPS
- ELECTRIC OVEN /  
MICROWAVE
- GAS COOKTOP
- CERAMIC FLOORING
- MDF CABINETRY WITH  
AMERICAN OAK VENEER
- ALUMINUM WINDOWS
- GLASS DOORS WITH  
TEMPERED GLASS



\*Imagen ilustrativa sujeta a modificaciones.



## APARTMENTS

# PRE - SALE TOWER 2

24 apartments  
in 3 different models:

- 4 Roseta Model  
-2 available
- 4 Obsidiana Model  
-100% sold
- 16 Galena Model  
-11 available

# ROSETA *Model*

AREA: 128.84 M<sup>2</sup> / 2 BEDROOMS

- FULLY EQUIPPED KITCHEN
- LAUNDRY ROOM
- LIVING / DINING AREA
- TERRACE
- MASTER BEDROOM WITH CLOSET, WALK-IN CLOSET, AND BATHROOM
- SECONDARY BEDROOM WITH CLOSET
- FULL BATHROOM
- 2 UNDERGROUND PARKING SPACES
- STORAGE UNIT IN PARKING AREA



## *Features:*

- GRANITE COUNTERTOPS
- ELECTRIC OVEN /MICROWAVE
- GAS COOKTOP
- CERAMIC FLOORING
- MDF CABINETRY WITH AMERICAN OAK VENEER
- ALUMINUM WINDOWS
- GLASS DOORS WITH TEMPERED GLASS

\*Illustrative image subject to changes.

# GALENA *Model*

AREA: 142.42 m<sup>2</sup> / 2 BEDROOMS

- FULLY EQUIPPED KITCHEN
- LAUNDRY ROOM
- LIVING / DINING AREA
- TERRACE
- MASTER BEDROOM WITH CLOSET, WALK-IN CLOSET, AND BATHROOM
- SECONDARY BEDROOM WITH CLOSET
- FULL BATHROOM
- 2 UNDERGROUND PARKING SPACES
- STORAGE UNIT IN PARKING AREA



## *Features:*

- GRANITE COUNTERTOPS
- ELECTRIC OVEN /MICROWAVE
- GAS COOKTOP
- CERAMIC FLOORING
- MDF CABINETS WITH AMERICAN OAK VENEER
- ALUMINUM WINDOWS
- GLASS DOORS WITH TEMPERED GLASS

\*Illustrative image subject to changes.



# Amenidades



SECURITY  
BOOTHS



CLUBHOUSE  
WITH TERRACE



WALKWAYS



POOL



FIRE PIT



TREED AREA



UNDERGROUND  
PARKING



MONUMENTAL LOBBY  
WITH ELEVATORS



PET  
BATHROOM

An aerial photograph of a coastal town, likely in Hawaii, during the golden hour of sunset. The town is built on a peninsula, with a marina filled with sailboats in the foreground. The background features rolling hills and mountains under a clear sky. The text "Live AMONG Landscapes" is overlaid in a white, elegant script font, with "AMONG" in a smaller, all-caps sans-serif font.

Live AMONG  
Landscapes



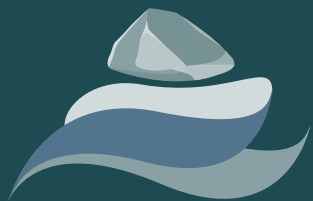
5 MINUTES FROM THE CENTER OF AJJIC



30 MINUTES FROM THE AIRPORT



60 MINUTES FROM GUADALAJARA



# PIEDRAVIVA

Living & Leisure



**380 Ocampo Street**

Corner of Playa Escondida Street,  
Villa Lucerna, Ajijic, Jalisco



**PIEDRAVIVA AJIJIC**

---



**repcion@npv.com.mx**



**33.3666.1452**



**pedraviva.com.mx**



**pedraviva\_ajijic**



**pedravivalivingandleisure**